



PLANNING DEVELOPMENT MANAGEMENT COMMITTEE



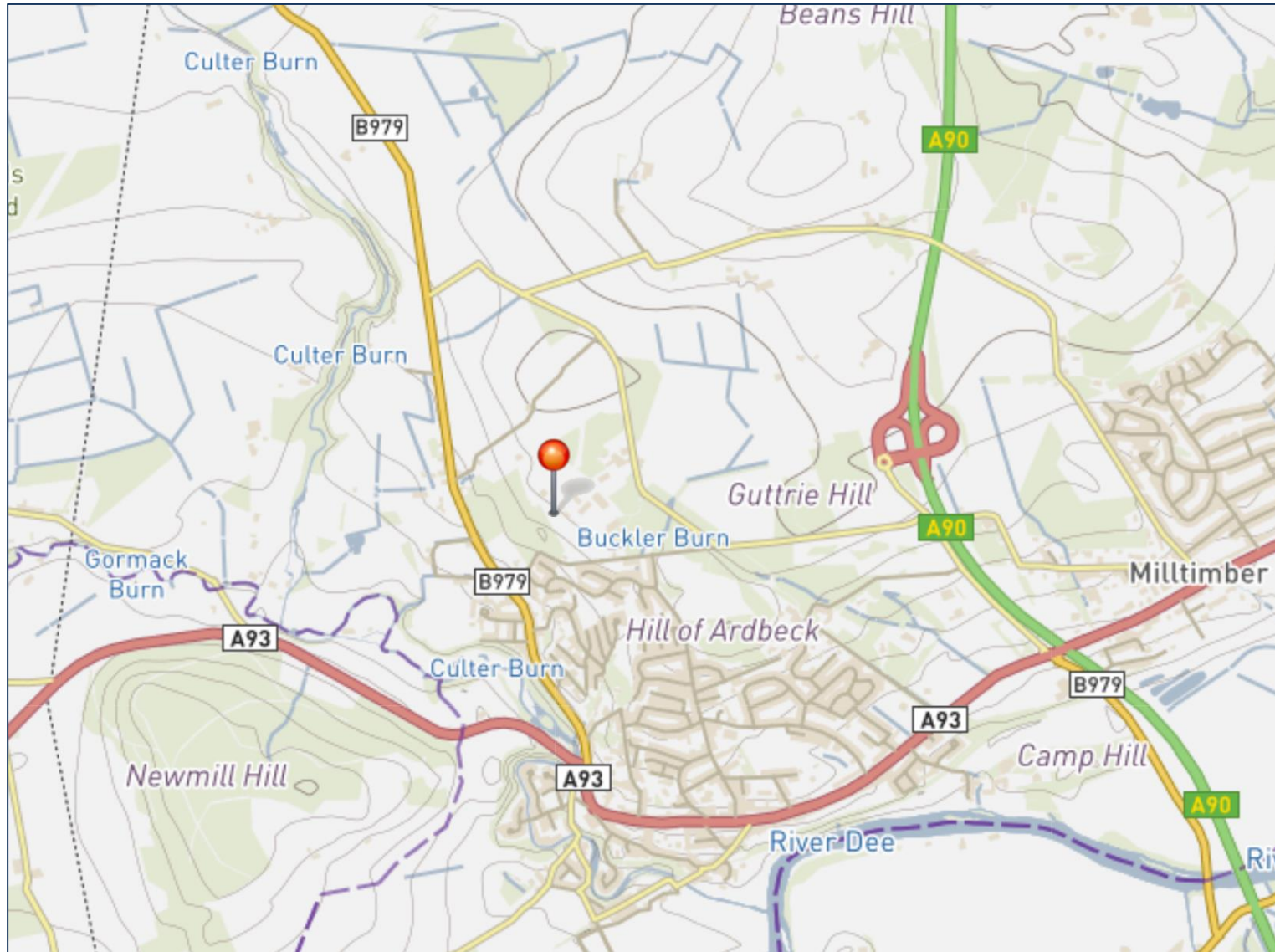
20 January 2021

Residential development (circa 250 units) with associated infrastructure, open space, landscaping and community facilities

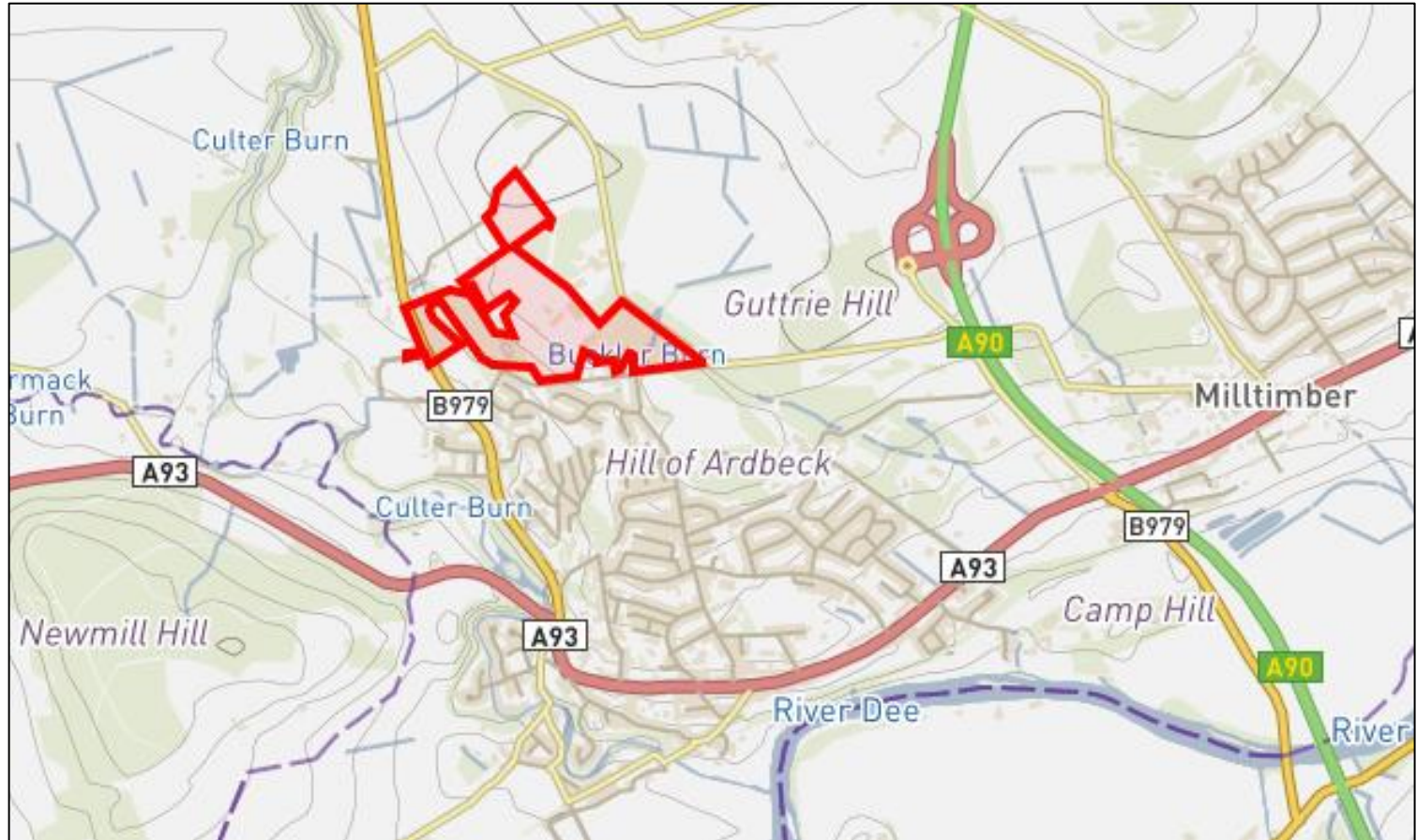
Land At Tillyoch, Culter House Road,
Peterculter, Aberdeen, AB14 0NS

Application reference: 211699/PPP

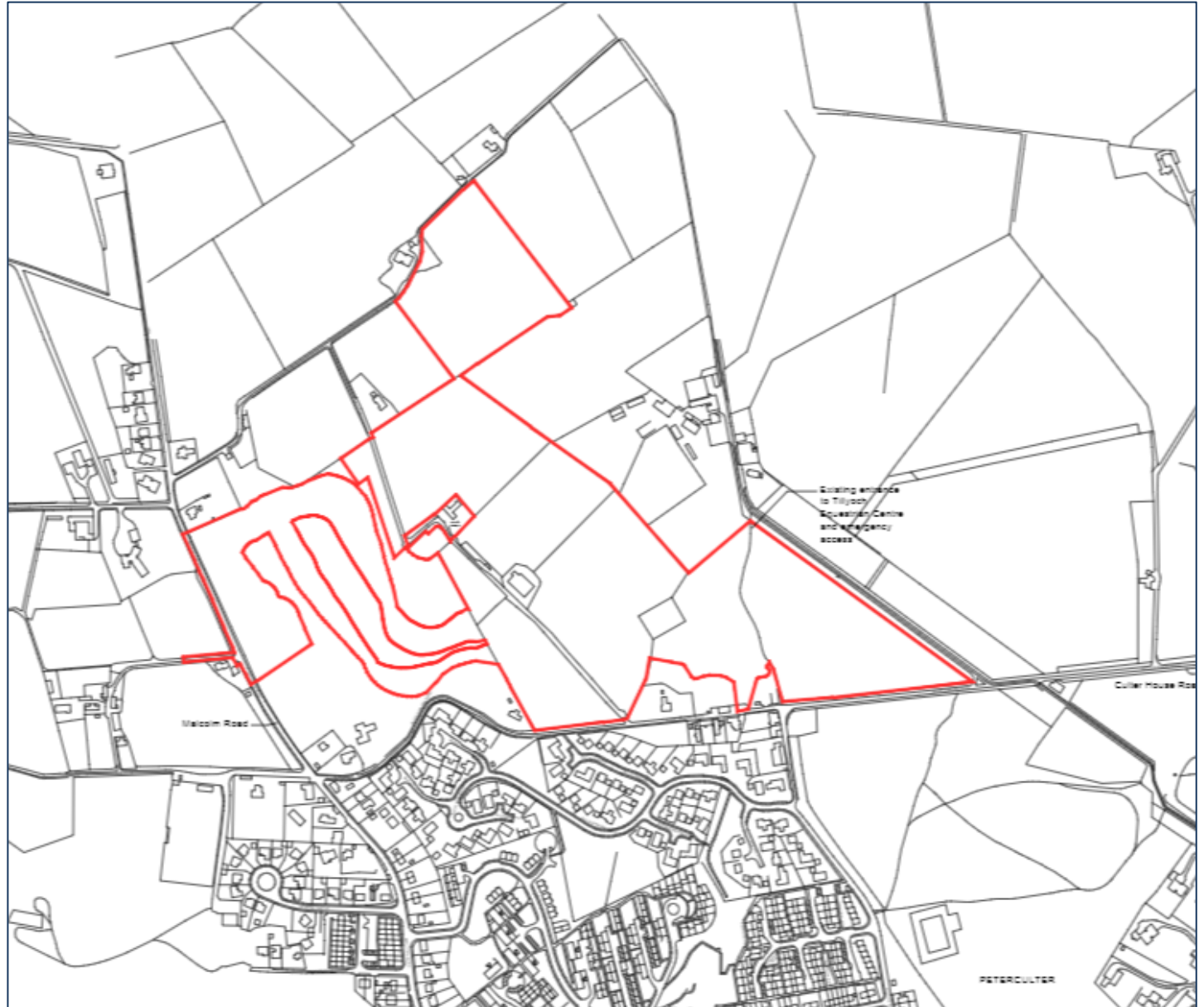
Site Location (GIS) – Wider Context



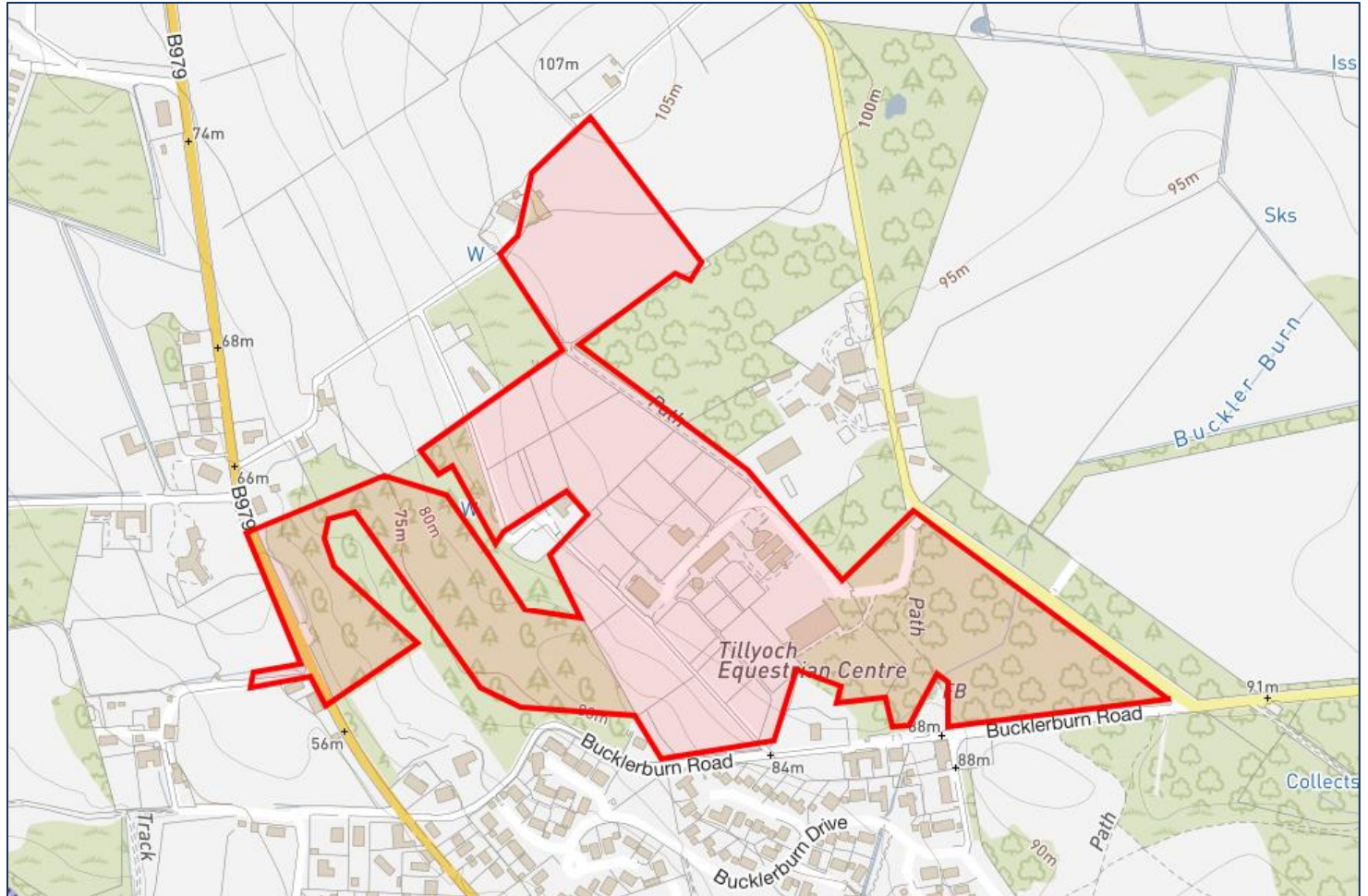
Site Location (GIS) – Wider Context



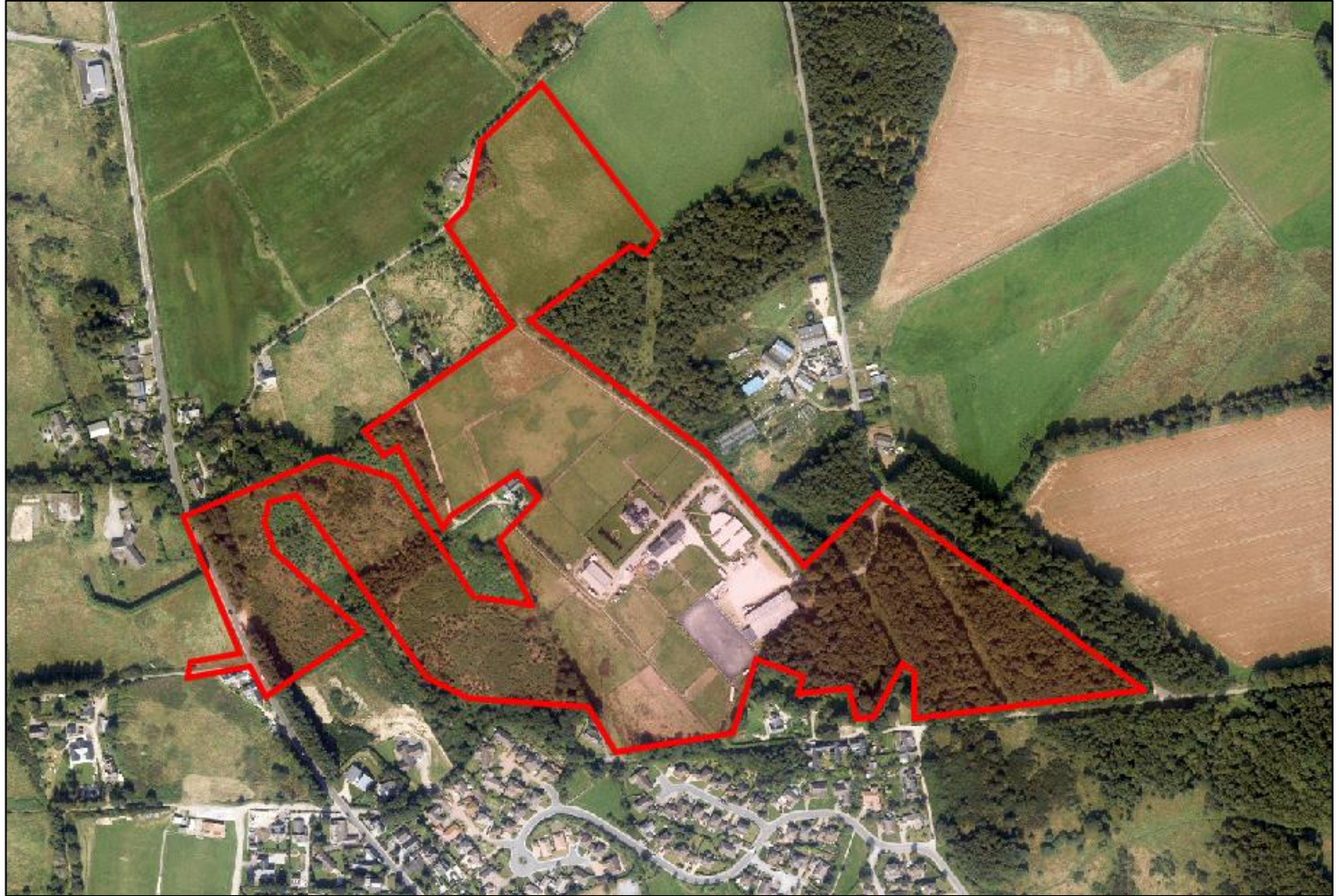
Site Location



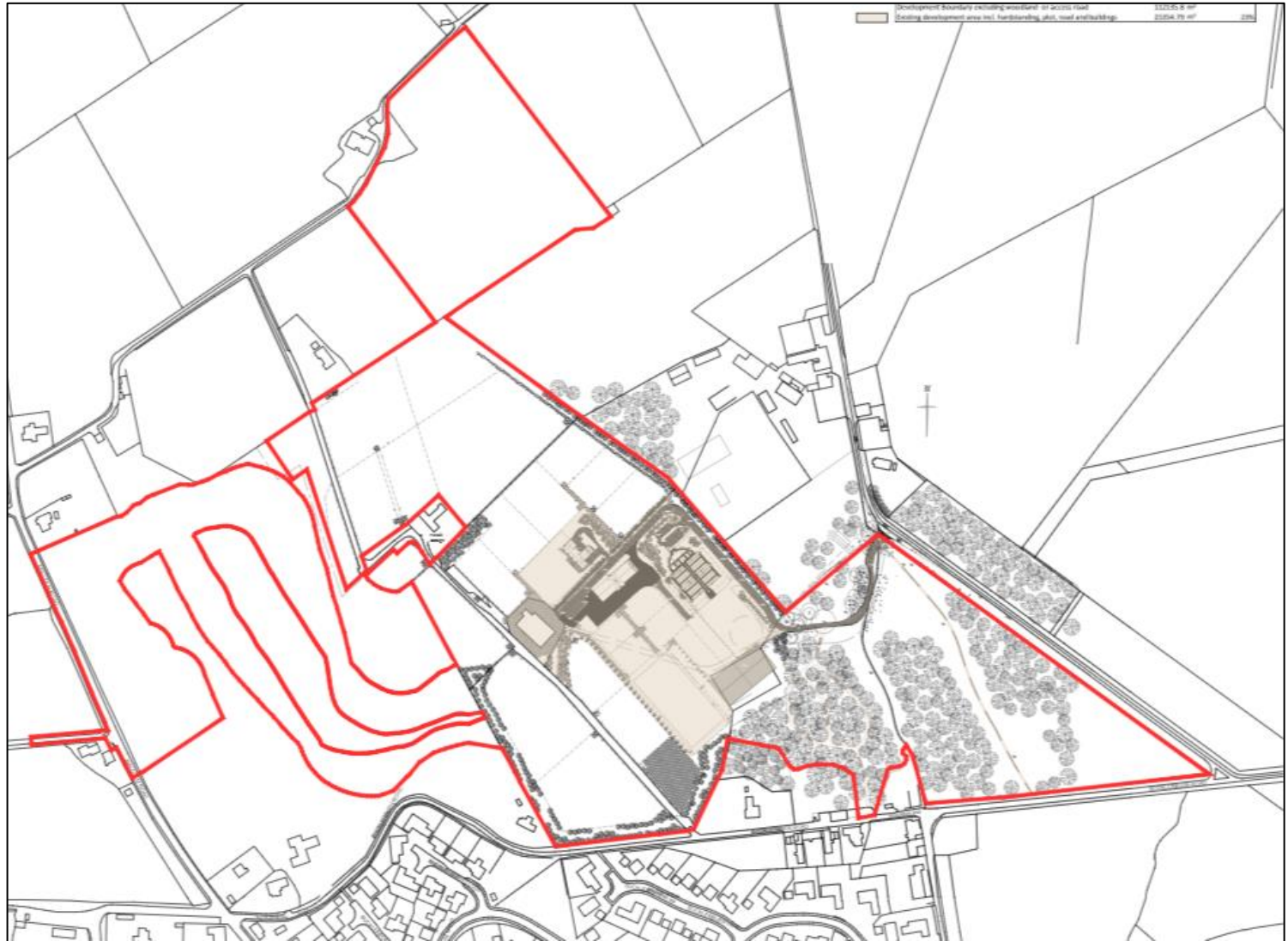
Site Location (GIS) – Site Location



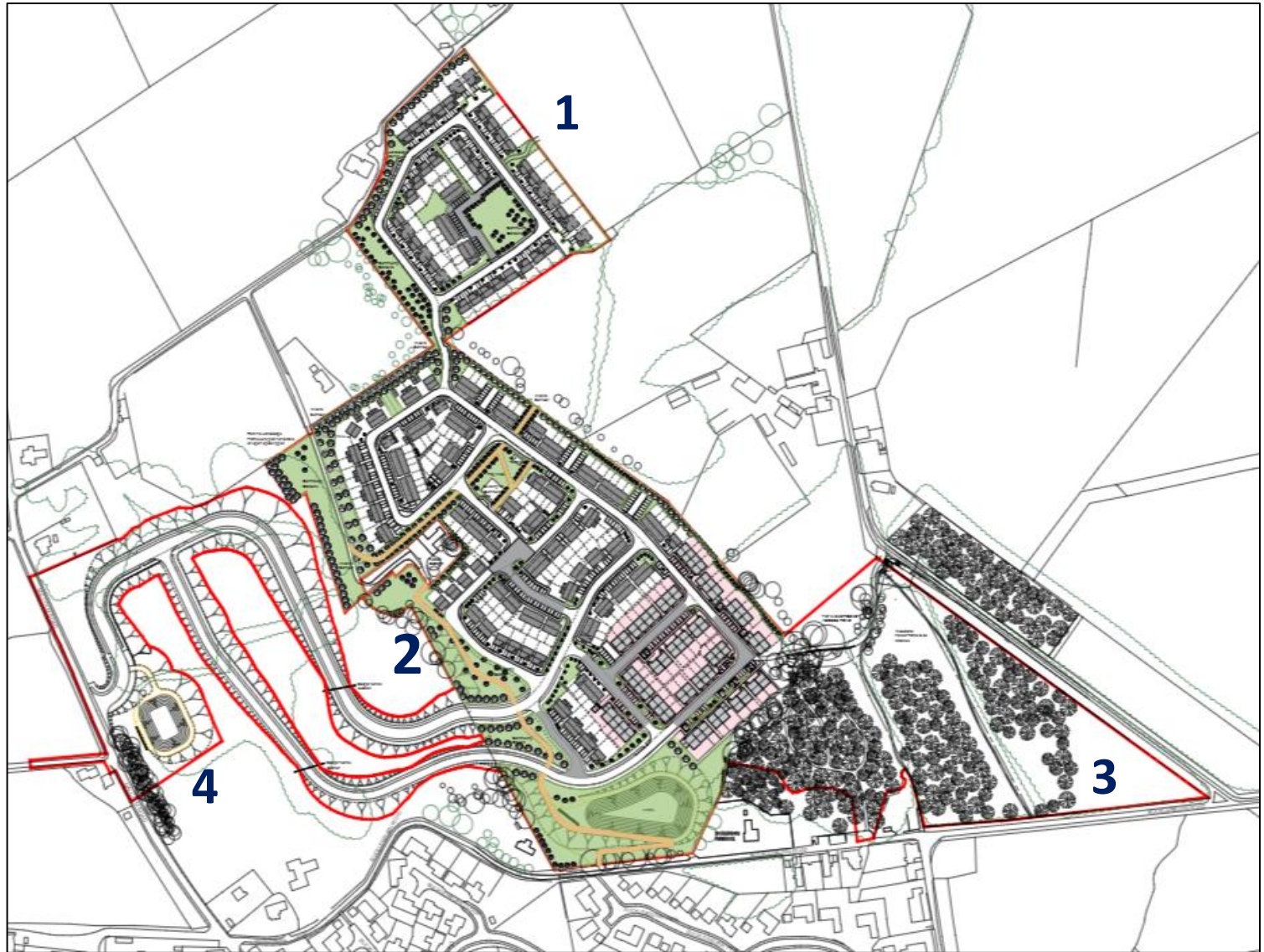
Site Location (GIS) – Aerial



Existing Site Plan



Proposed Site Plan



Proposed Site Plan – Area 1



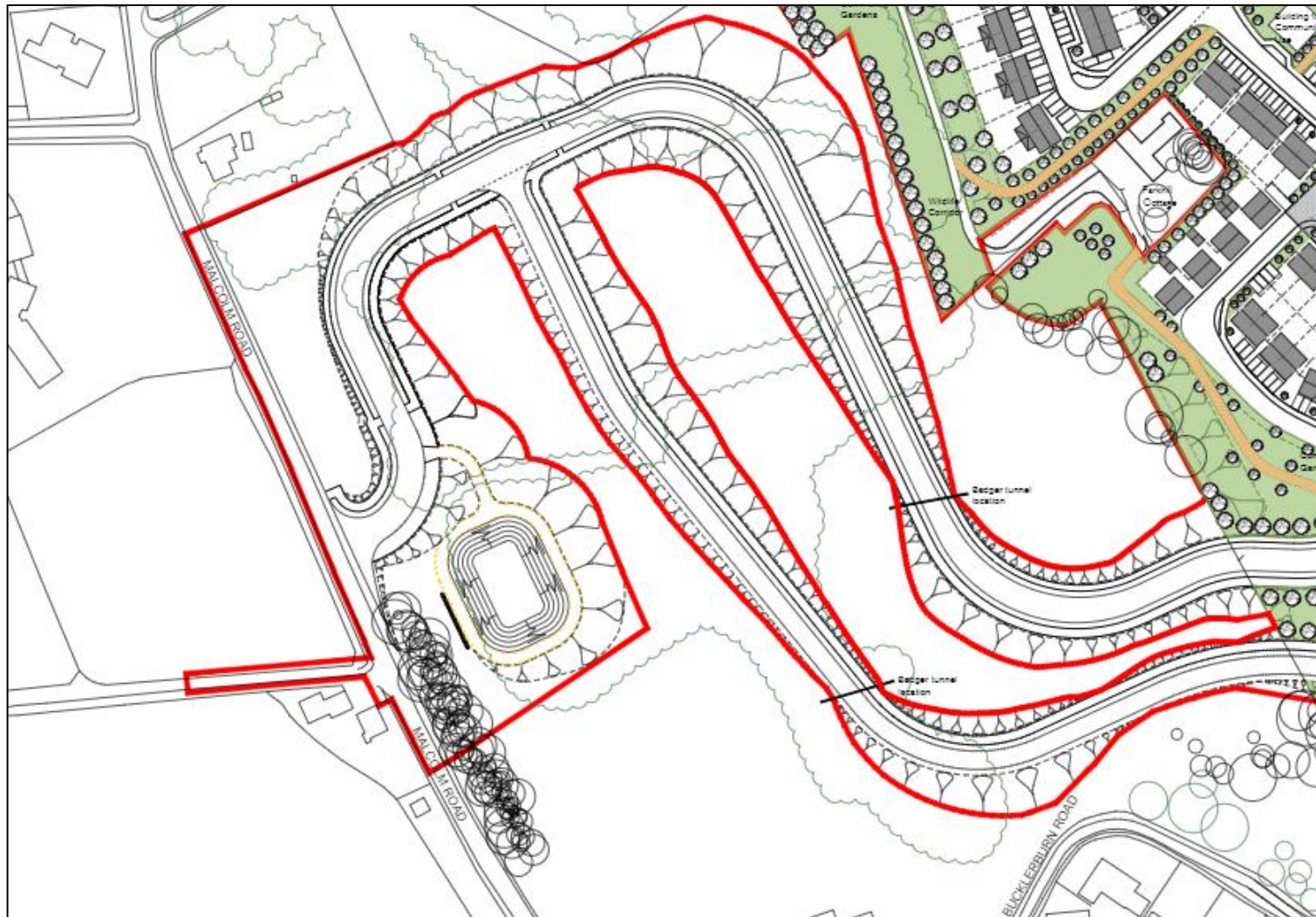
Proposed Site Plan – Area 2



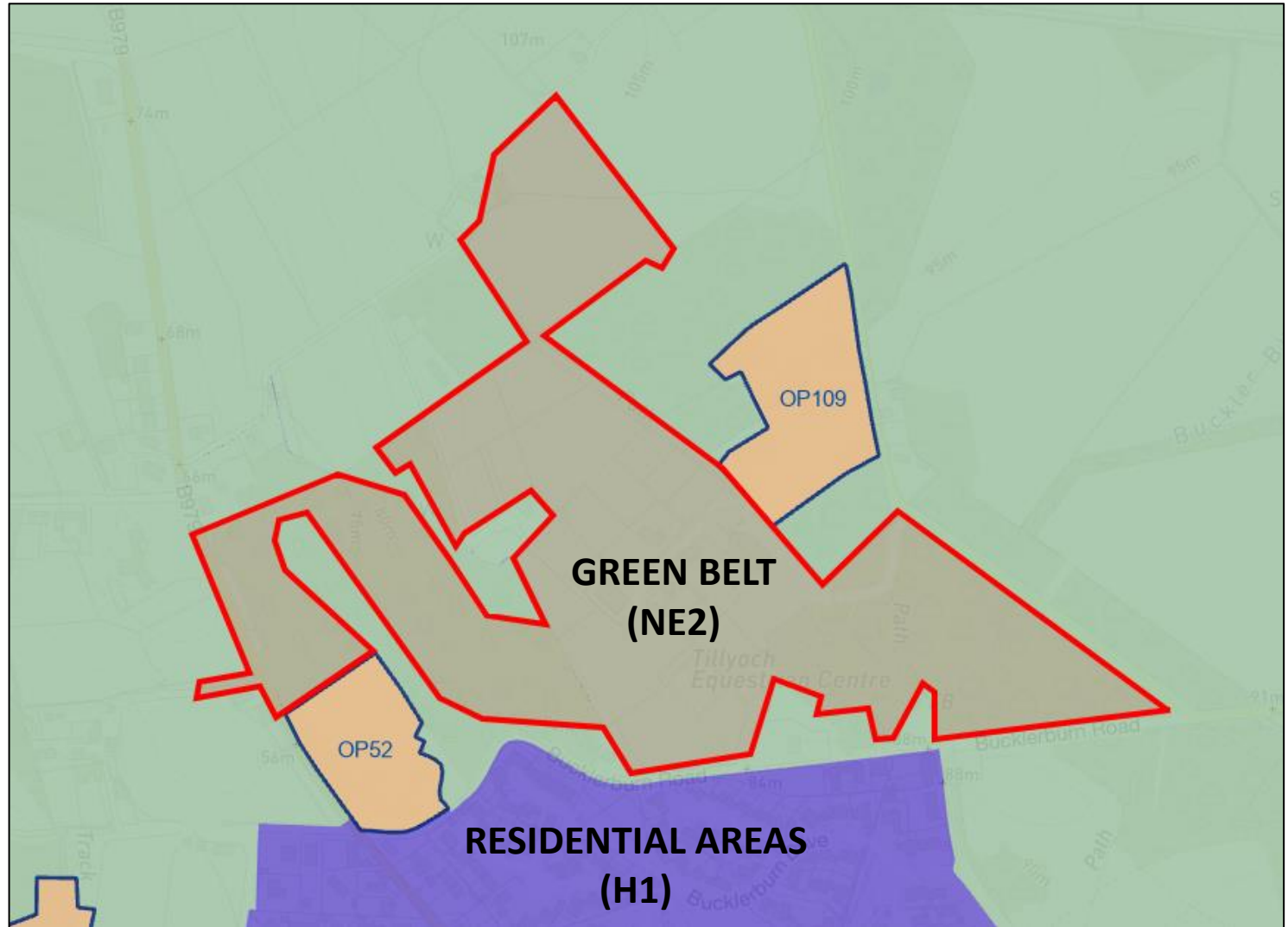
Proposed Site Plan – Area 3



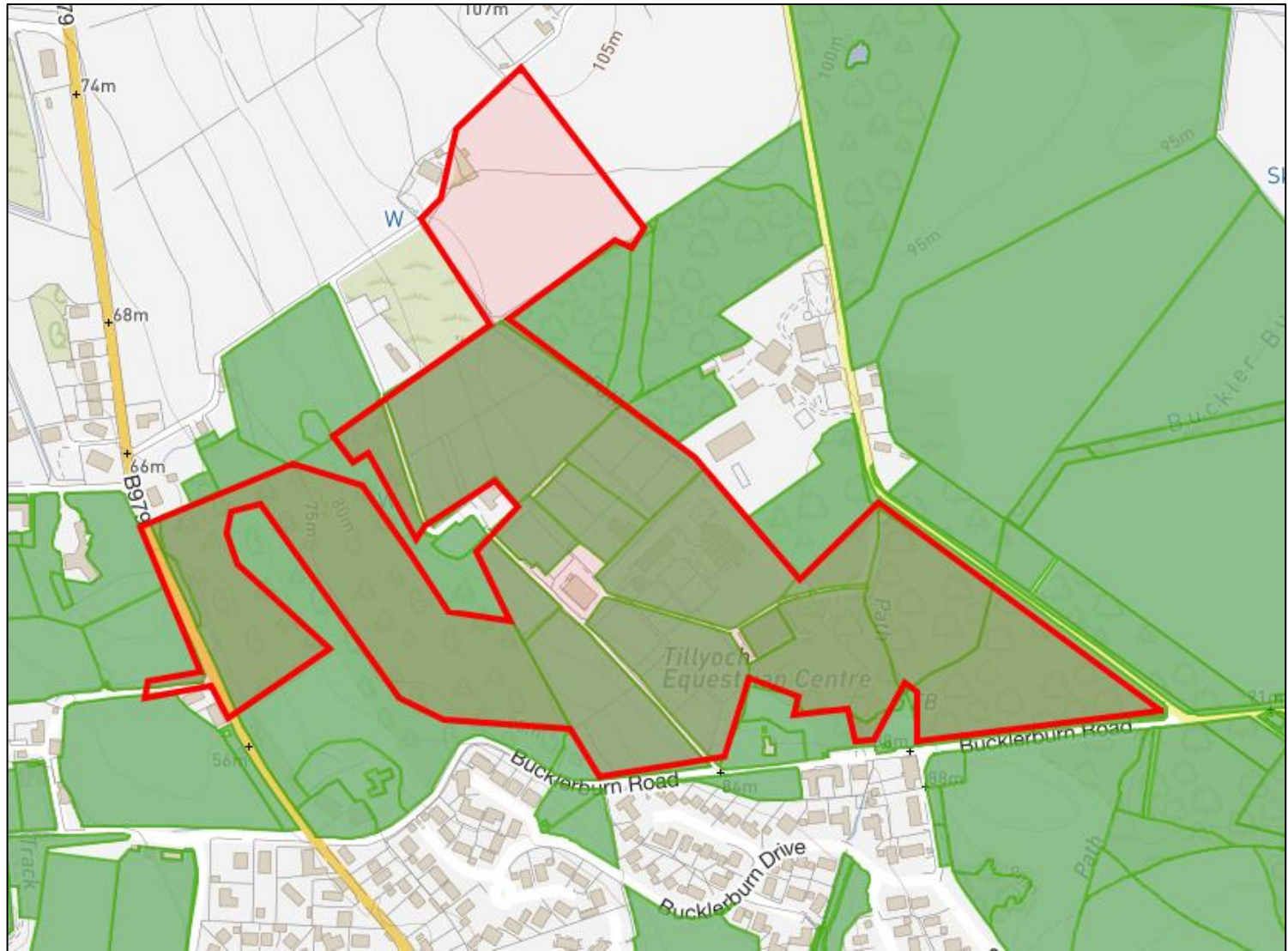
Proposed Site Plan – Area 4



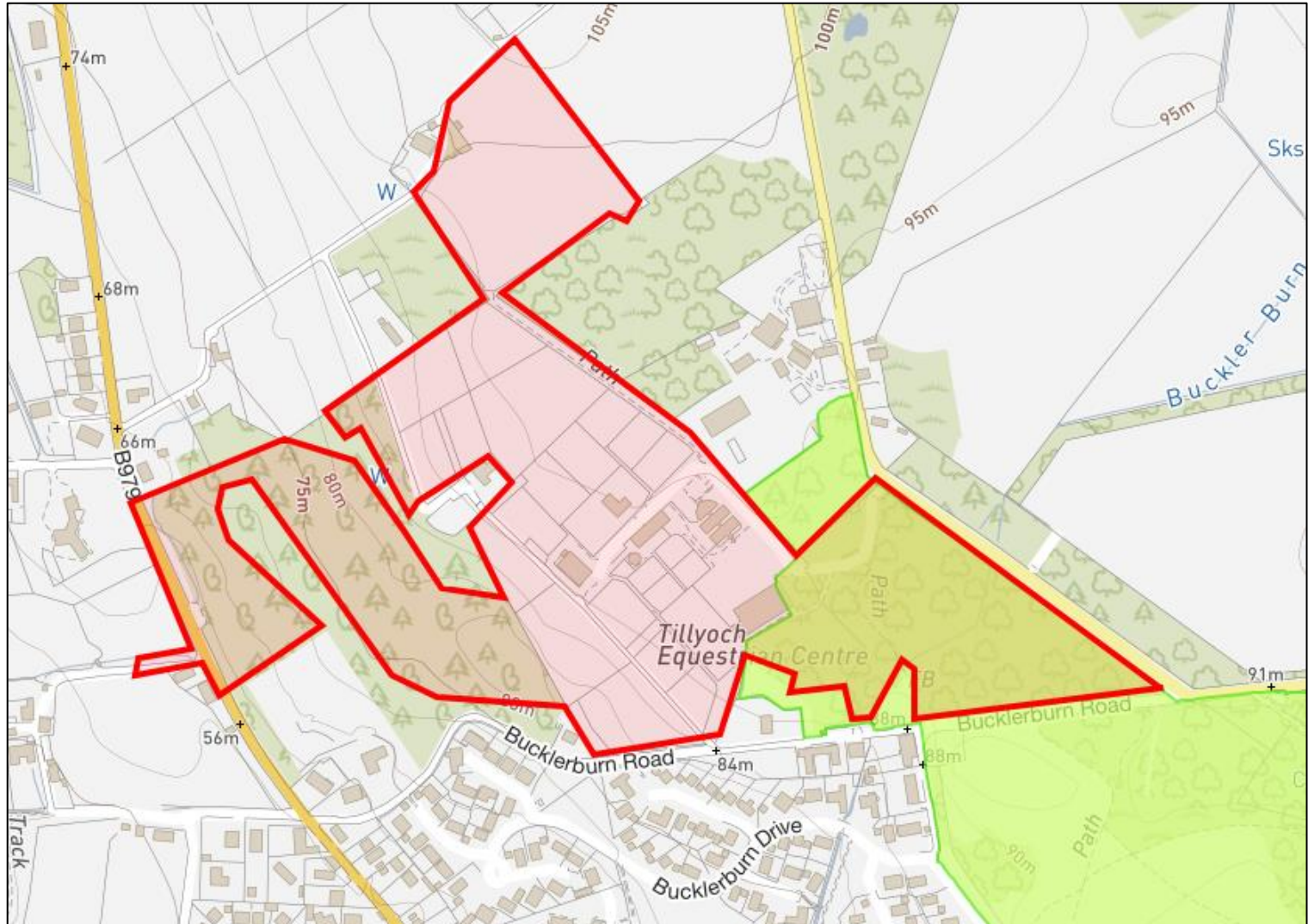
2017 ALDP - Zoning



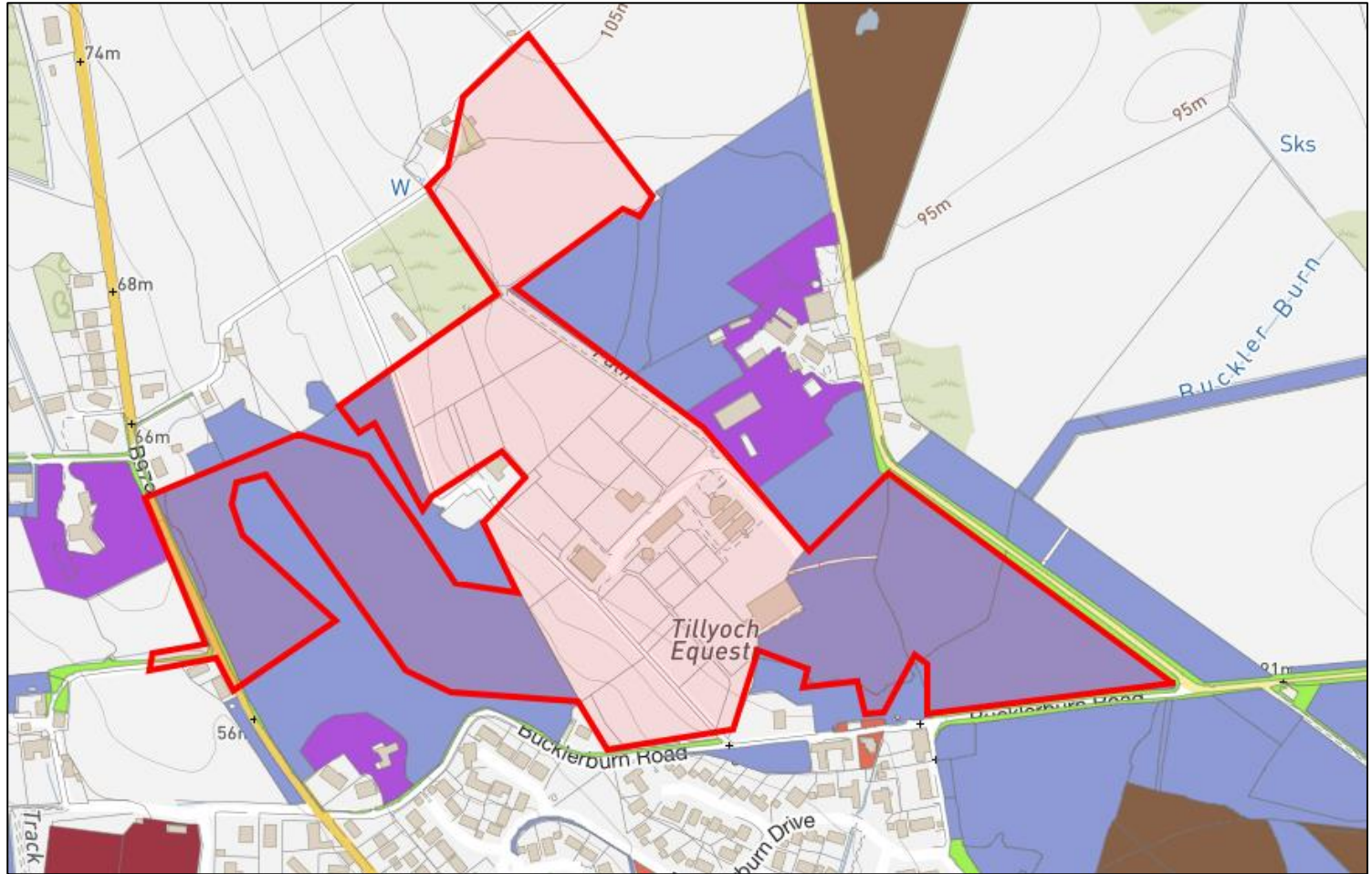
2017 ALDP – Green Space Network



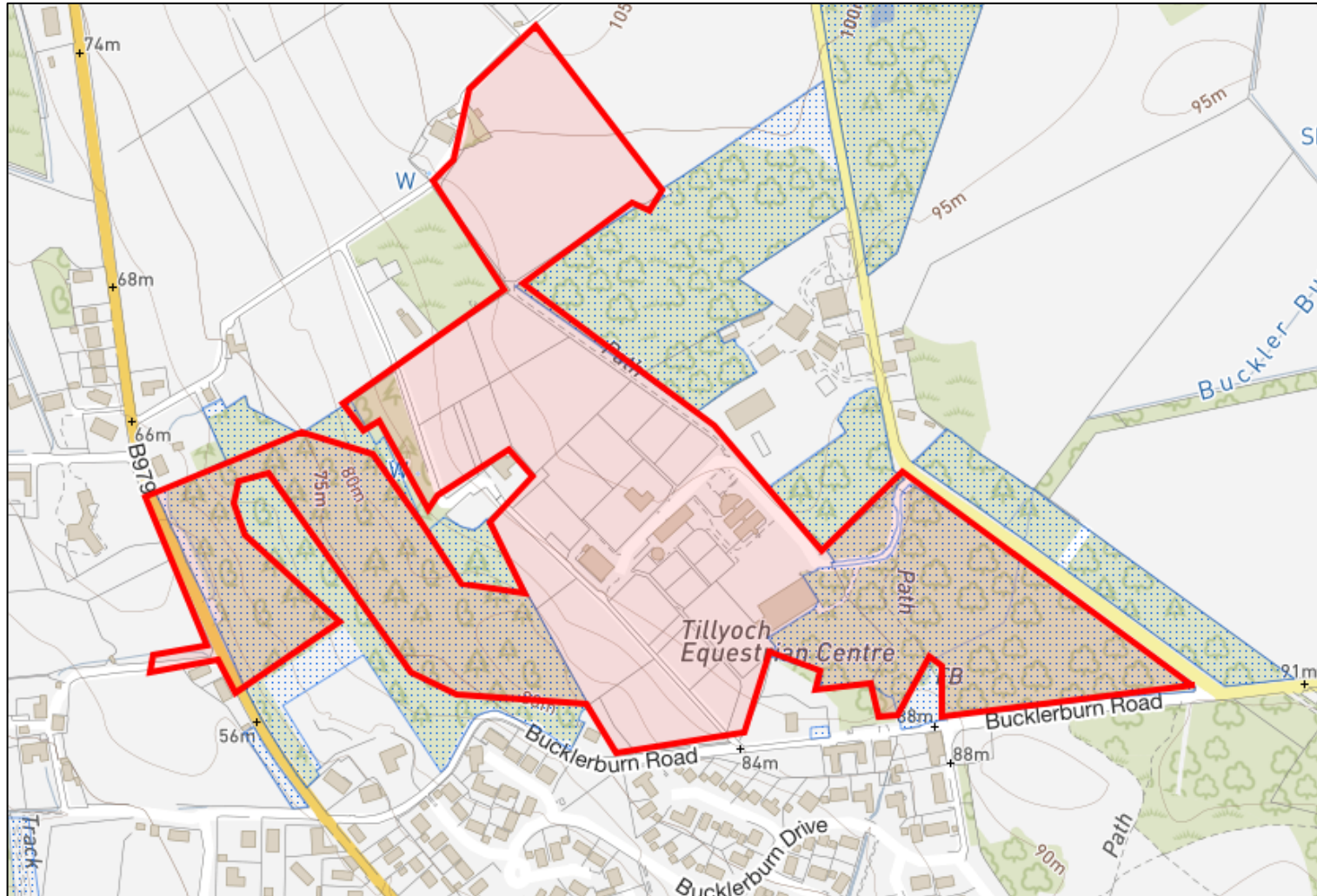
Local Nature Conservation Site



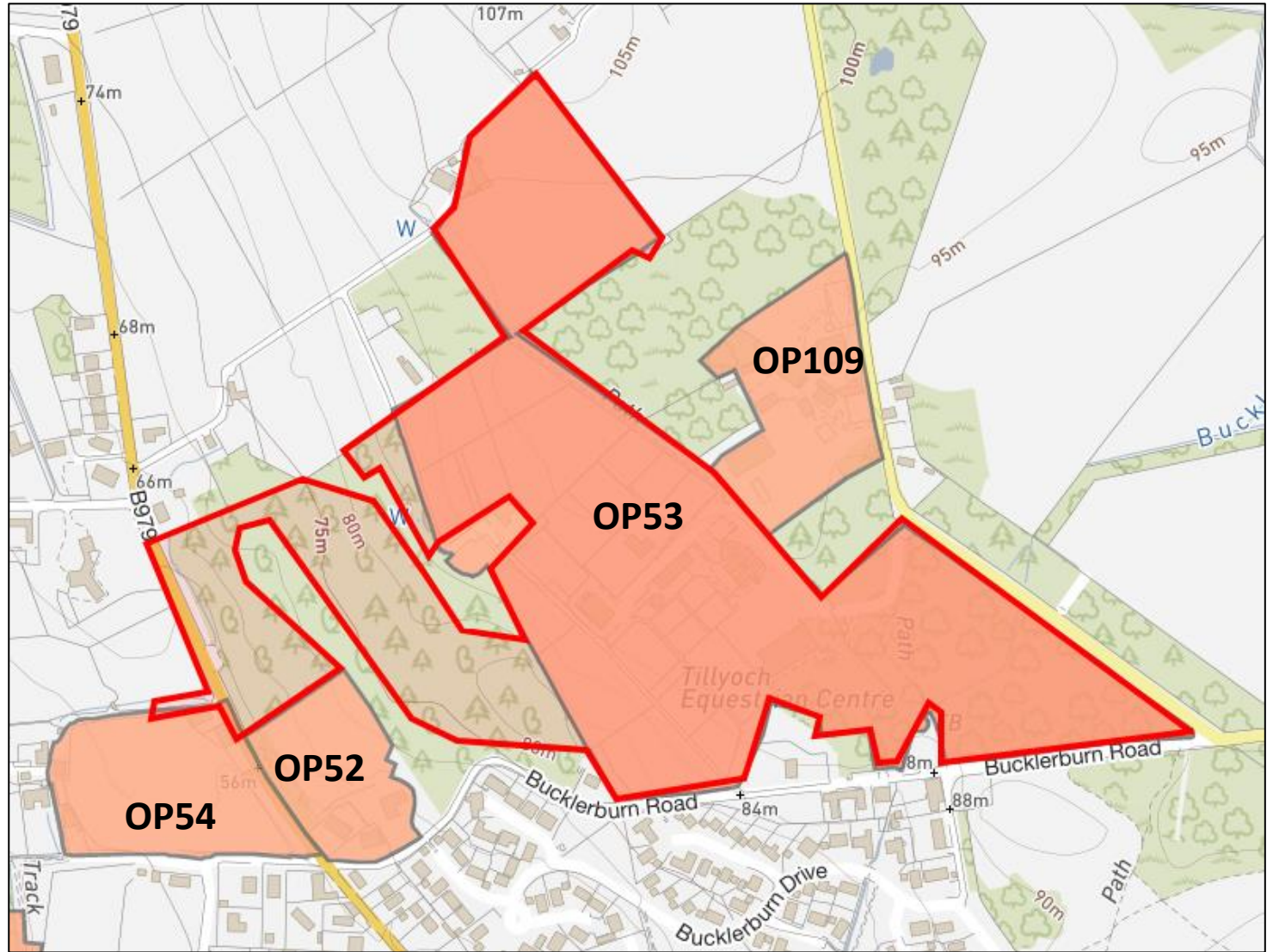
2010 Open Space Audit



Tree Preservation Orders



Proposed ALDP Designations



Site Photo

View towards the western boundary



Site Photos

View of existing paddocks looking east



Aerial Image looking northwest



Aerial Image looking east

